



Without Trust We Can't Build

Dreams comes true...

Aramaic South Home

15/Ka (3rd Floor), Shyamoly, Mirpur Road, Mohammadpur, Dhaka-1207.
 Website: www.aramaicrealestate.com E-mail : info@aramaicrealestate.com
 Phone : +88-02-9111120, 01761822000, 01761822002.

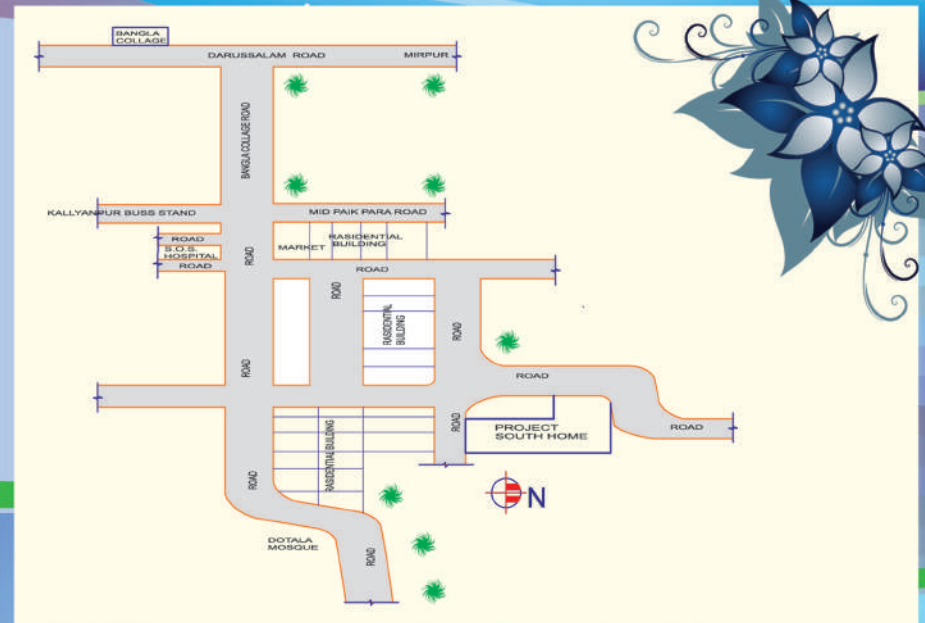
aramaic
 REAL ESTATE LIMITED

Aramaic

Real Estate Limited

INTRODUCTION

Dear Customer,
Welcome to Aramaic Real Estate. South Home is located in the residential area of the Dhaka city. Which are designed by a group of highly professional and qualified Architects and Engineers using latest technology and being constructed with meticulous care and attention. By the grace of Allah, We hope to hand-over these master pieces of flat for living before the commitment time.
It is our great pleasure to announce our apartment project "South Home". We have chosen the right location for you and your family. Which would be comfortable peaceful surround living home. South Home is free from pollution smell refuse chaotic road and bustle of living in most of the city center.
However, we invite you to visit our project site find yourself, and there by appreciate the beauty of things to come and chose your dreamed house for your family.

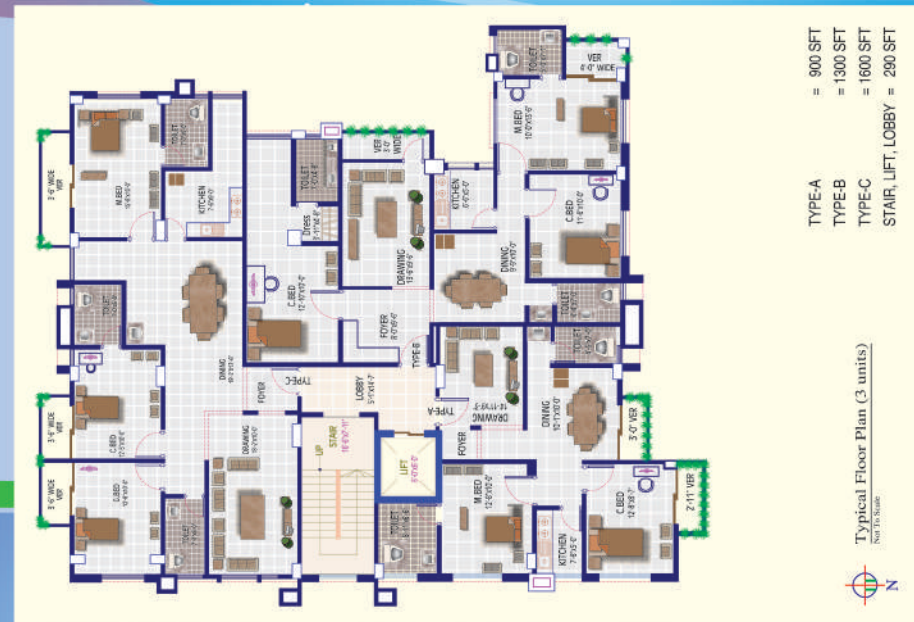


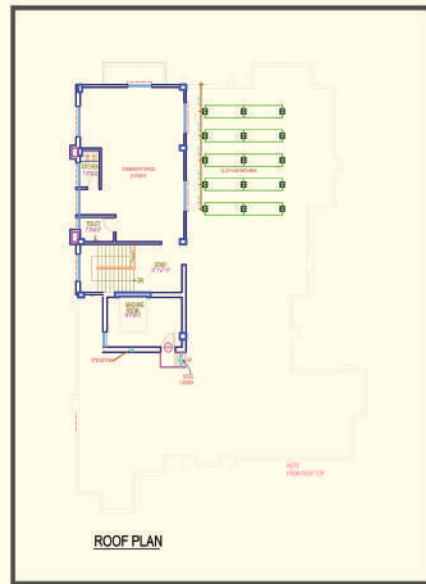
Aramaic

Real Estate Limited

PROJECT PROFILE

Project Name	: Aramaic South Hoom
Developer	: Aramaic Real Estate Limited
Location	: South Paik Para
Total Area	: 7.75 Khata
Levels	: Eight Storied
Size of Apartment	: Type A : 935 Sft. Type B : 1300 Sft. Type C : 1600 Sft.
Facilities	: 2/3 Bed, Living, Dining, 2/3 Bath, 2 Veranda & Kitchen
Expected Handover Date	: April 2015







Kitchen :

- Provision for double burner Gas outlet.
- 7 feet height of wall tiles (BISK / RAK) running on wall inside the kitchen.
- One high polished stainless steel sink with Mixer (single bowl/single tray).
- Provision of exhaust fan (1 no.)

Bathrooms :

- Best quality local sanitary fittings.
- Plastic water proof flush door.
- Glazed local tiles.
- All Bathrooms with homogenous floor & wall RAK tiles / Equivalent.
- Mirrors in Bathrooms with overhead lamps.
- Soap cases & Towel Rails (local).
- Nicely arranged Bathroom fittings & fixtures.
- Storage space over toilets.
- Muster toilet commode and others toilet

Floors :

- RAK / Equivalent homogenous tiles.
- Floor tiles in Bathrooms.

Electrical :

- Independent electric meter in each apartment.
- Good qualitative Electrical Piano type Switches.
- Circuit Breakers, Plug points and other fittings.
- BRB / Paradise electrical cable.
- An electrical distribution Box with Main Switch.
- Concealed Electrical wiring.
- Light in all rooms.

- 2 lights, 2 fans per unit Earthing connection.
- Fan Hook.
- Provision for Air Condition for one bed.
- Light points in Veranda.
- Two Emergency light points in each apartment.
- Emergency electricity supply to pumps, Lobby, Intercom service, Common spaces like Car parking, Reception area.
- Concealed Intercom and Telephone line, TV & satellite Dish Antenna system in living room & Master Bed room.

Doors & windows :

- Solid Mahogoni Decorative main entrance door.
- Cheek viewer.
- Apartment No. in Brass.
- Main Door handle with Lock.
- Internal Doors are of strong and Gamary Veneared flush door with French polish.
- All Internal Door frames made of Shillkoro, Mahogani as pre seasonal availability.
- All Doors with good quality local Locks Fittings without kitchen and bathroom.
- 3 mm aluminum frame sliding windows with planed 5m Glass completed.
- Safety Grills.
- Good quality locks in windows.

Walls :

- Walls below ground are 10" Brick work.
- Outside wall are plastered 5" Brick work.
- All interior are also plastered 5" Brick work.
- Lift lobby in Ground floor will be glazed tiles (REX Equivalent) other lobby and lift outside wall will be Equivalent glazed tiles.

Painting & Polishing :

- Berger/Asian/Eite/Equivalent

Stair :

- Stainless steel or steal hole box.
- RAK / Equivalent tiles.

Roof :

- Average 4" thick lime terracing or patent stone of 3" thick.
- Angles/Ts/Pipes will be erected for cloth drying, Lighting arrester.

Utility lines (Water & Gas):

- Concealed water lines.
- Sewerage & stream water connected to WASA.
- Water reservoir designed to hold two and half days water supply in the roof top tank.
- A best quality water pump.
- Titas Gas design.
- Concealed Gas lines.

Generator:

- Engine- Perkins/Dittos/Catter piler/Getco/Similarity
- Brand- FG Wilson/Daily/Dittos/ Similarity

Lift :

- Brand- Sigma/Yongxing/Hyundai/ Bester/ Similarity
- Speed-1 Meter per second.

Water Pump:

- Pedrollo/ Similarity