



...Expect the very best

ABOUT THE PROJECT & LOCATION



Dear Customer,
Welcome to MHM Properties Ltd. By the grace of Almighty, it is our great pleasure to announce our apartment project **"MHM-ARA NOOR CASTLE"**. This is positioned in one of the conveniently located suburb in Dhaka city. The excellent care and enormous efforts of our highly professional engineers and architects will glorify the project as one of the mile stone in Dhaka city. In sha Allah , we hope to deliver the project before our committed time frame.

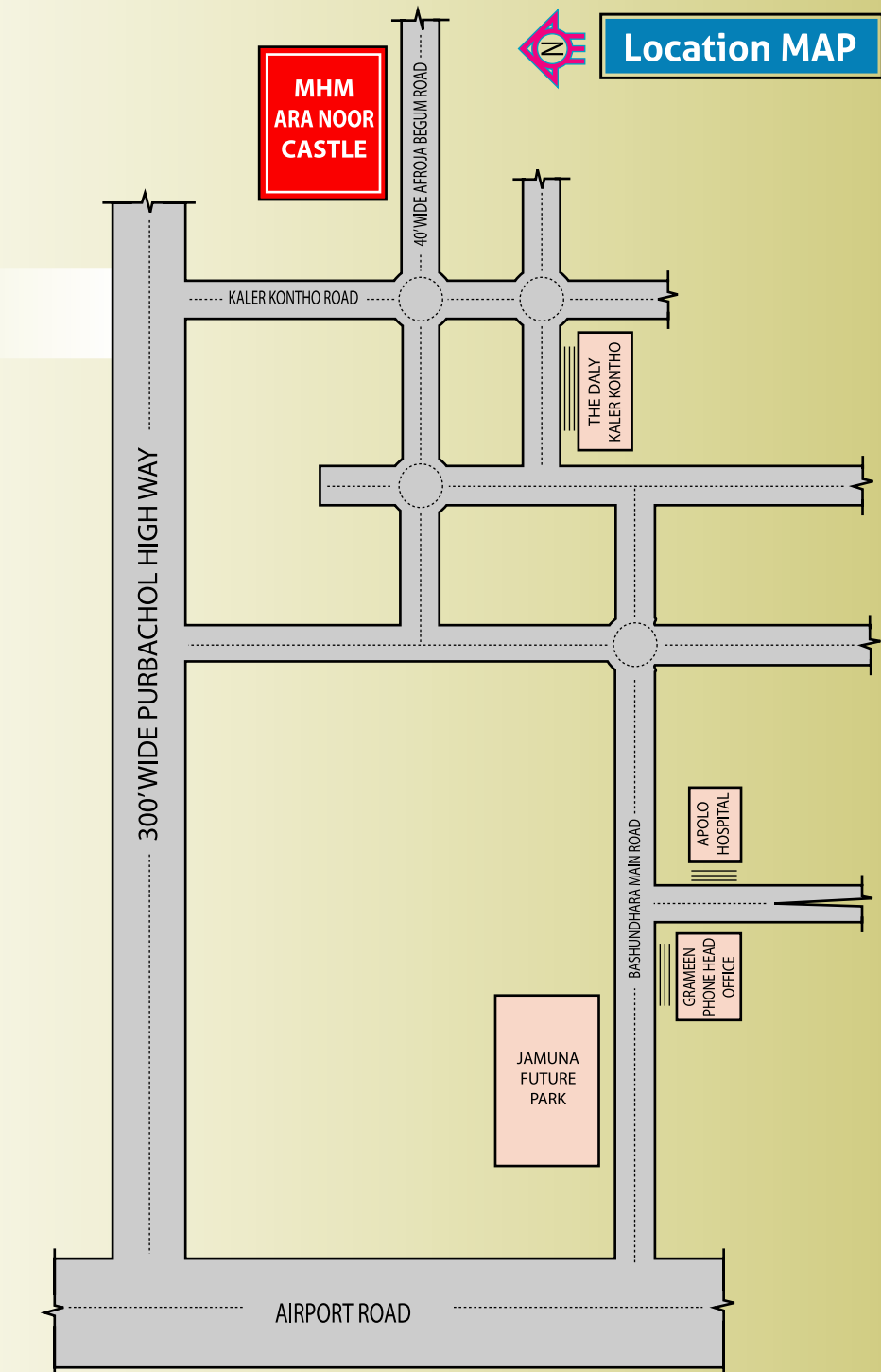
The project is located to all essential amenities- Kuril fly over, 300 fit high way road, Apollo Hospital, Bashundhara Convention Center, Viqarunnisa Noon School & College, Jamuna Future Park Shopping Mall and so on.

It is our pleasure to invite you to visit our project and feel your dream come true.

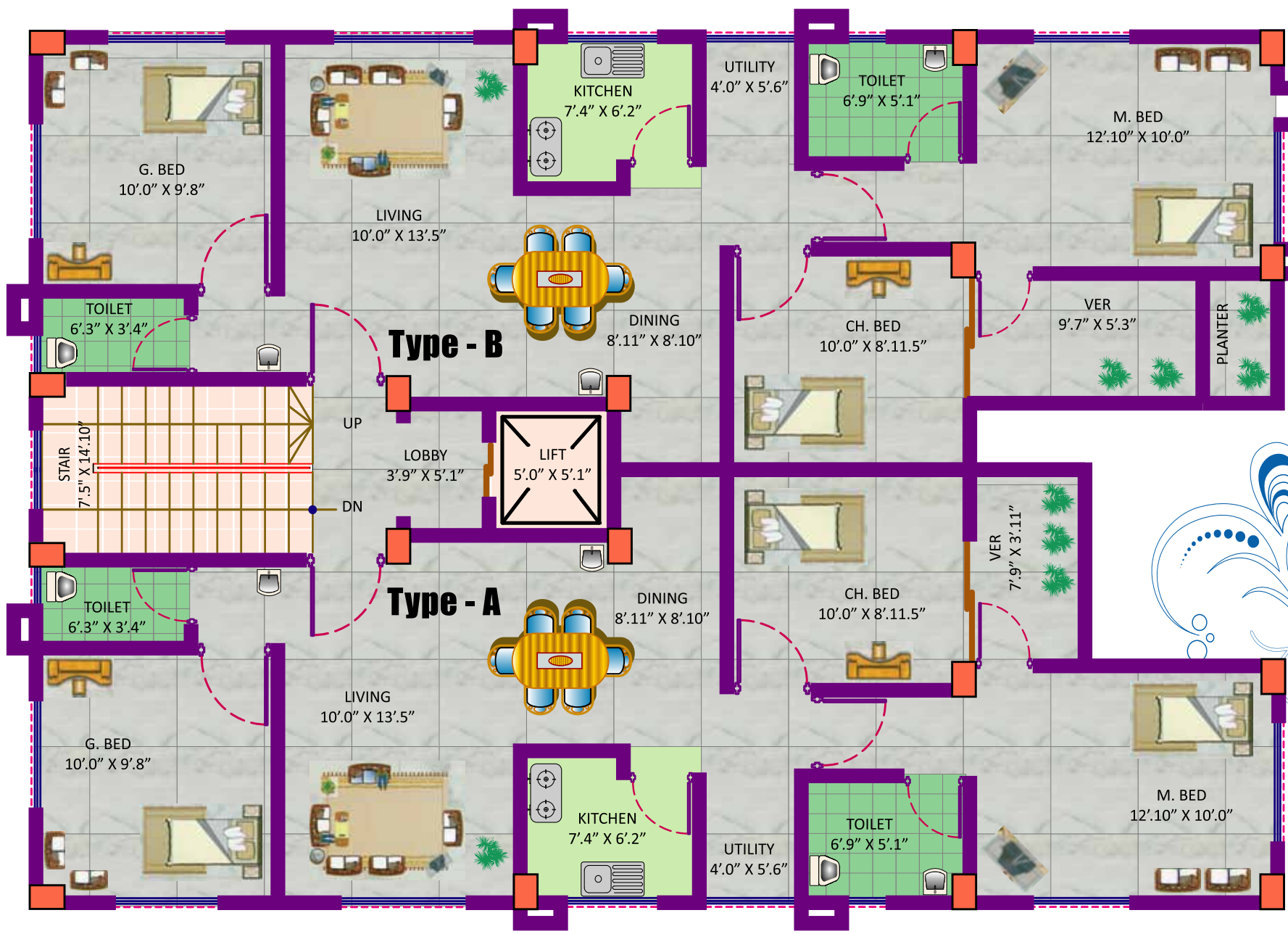
PROJECT PROFILE

Project Name	: MHM- ARA Noor Castle
Developer	: MHM Properties Limited
Location	: Plot # 728, Afroja Begum Road, Block # G Bashundhara Residential Area Baridhara, Dhaka.
Total Land	: 4 katha
Levels	: Seven Storied
Size Of Apartment	: Type A-1052 (Sft) Type B-1102 (Sft) Type C-2150(Sft)
Facilitis	: 3/4 Bed, Living, Dining 2/4 Bath, 1/2 Verandas, Kitchen

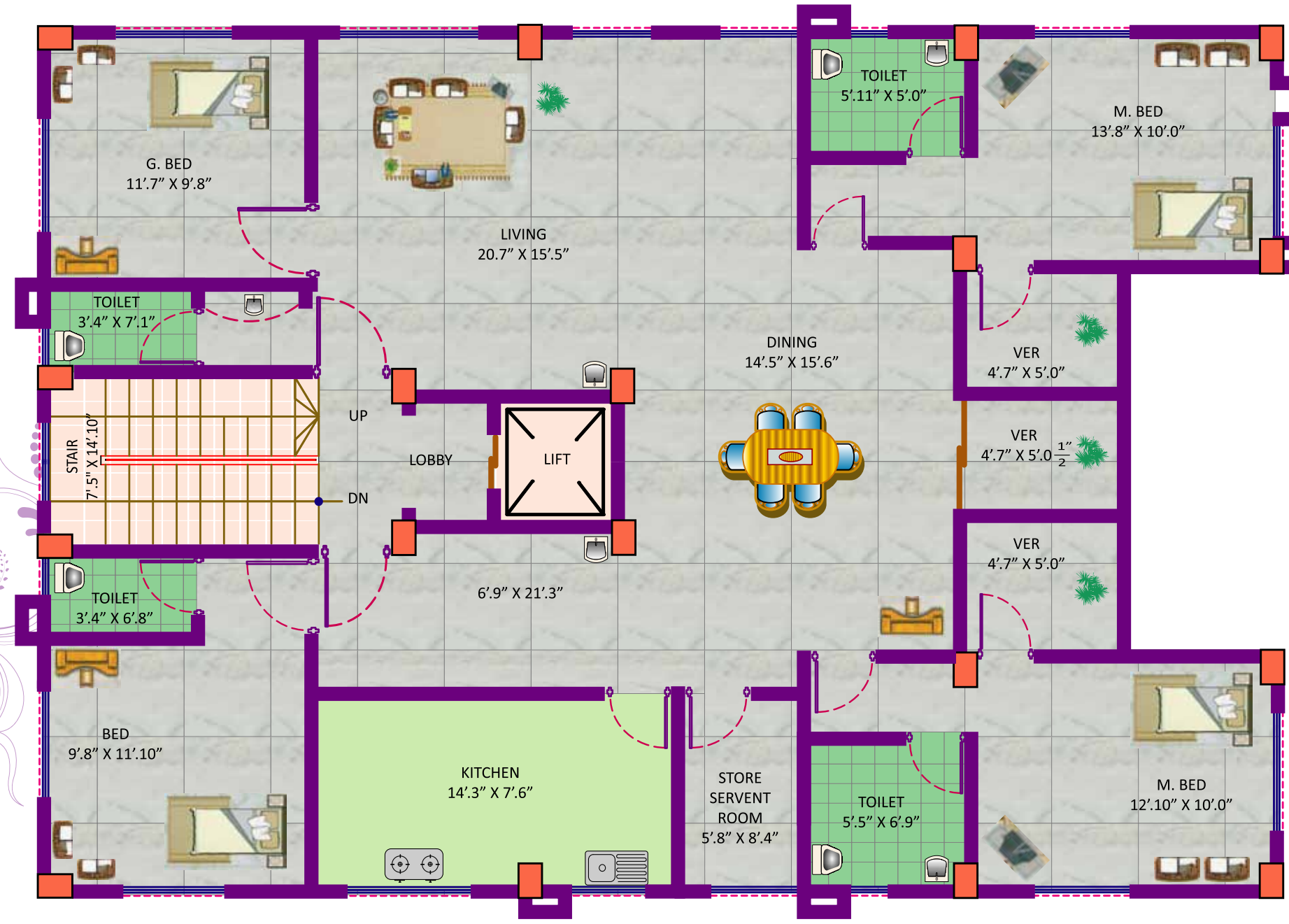
Expected Handover Date: (In sha Allah) June 2018



Typical Floor Plan

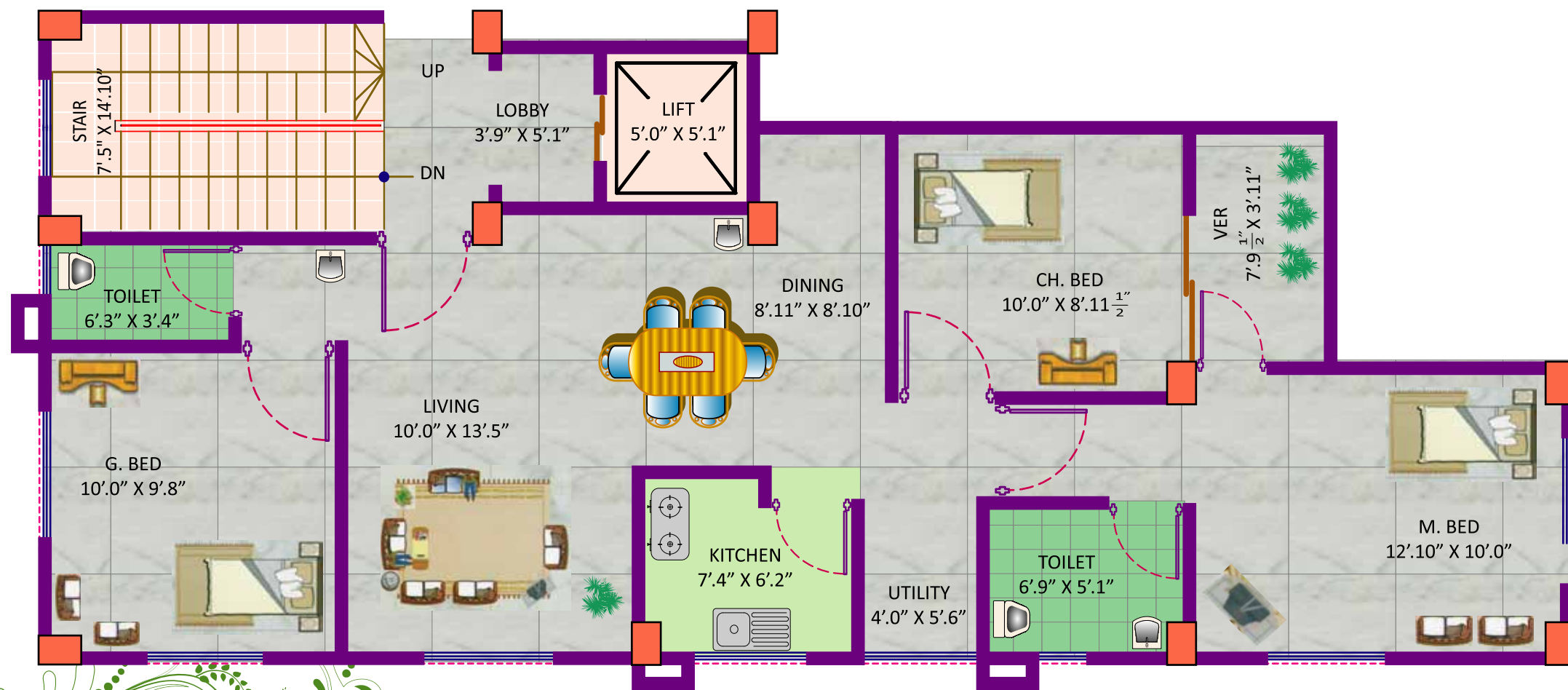


Type C-2150 Sft



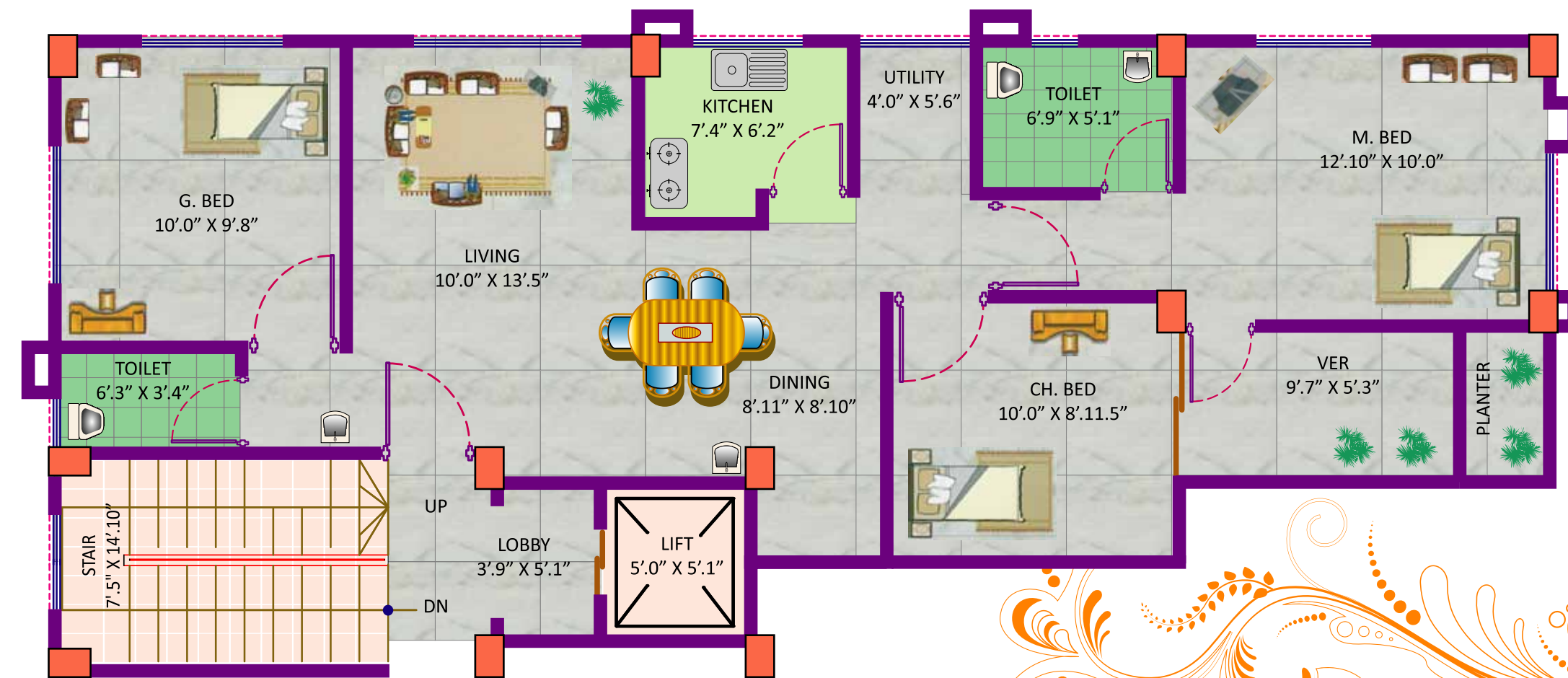
Type A-1052 sft

Typical Floor Plan



Type B-1102 sft

Typical Floor Plan



Features and Amenities of Apartment

Kitchen:

- Provision for double burner gas outlet.
- Seven feet height wall tiles (RAK/Great wall/CBC) runaround the kitchen.
- High mounted polished stainless steel sinks with mixer (Single bowl/Single tray).
- Provision of exhaust fan (1No).

Bathrooms:

- Best quality local sanitary fittings.
- Plastic water proof flush door.
- Glazed local tiles.
- All bathrooms with homogenous floor & wall tiles (RAK/Great wall/CBC).
- Mirror in bathroom with overhead lamp.
- Soap cases & towel rails (local).
- Nicely arranged bathroom fittings & fixtures.
- Storage space over toilets.
- Two commode will be provided in master and child bathroom and other bathrooms will be provided long pan. (Type C)
- One commode will be provided in master bathroom and other bathroom will be provided long pan. (Type A & Type B)

Floors:

- RAK/ Great wall/ CBC Equivalent homogenous tiles.
- Floor tiles in bathrooms.

Electrical:

- Independent electric meter in each apartment.
- SDB box and independent circuit breaker in each apartment.
- BRB / Paradise cable.
- Concealed electrical wiring.
- Good qualitative electrical piano types switches.
- Provision for Air Condition connection in master bedroom. (Type A & Type B)
- Provision for Air Condition connection in two bedrooms. (Type C)
- Provision for Fridge power connection in dining room.
- Two lights and One fan provision for each bed room and Living room.
- Two lights and two fan provision for dining room.
- One light point in veranda.
- Generator power supply for two lights and two fans for each apartment.
- Generator power supply for four lights and four fans for each apartment. (Type C)
- Mandatory power supply will be available from emergency generator on stair case, lobby, lift, entrance ,water pump and car park area.
- Intercom connection available for each apartment.
- Cable TV and land phone connection will be available on the living room and master bedroom.

Features and Amenities of Apartment

Doors:

- Solid Mahogany decorative main entrance door and door frame.
- Check viewer.
- Apartment numbers are in brass.
- Main doors handle with lock.
- Internal doors are of flush door and door frame are of Mehogoni.
- All doors are with good quality local locks and fittings.

Windows:

- Safety grill.
- Aluminum framed sliding windows with 5mm glass.
- Good quality locks in windows.

Walls:

- Walls below ground are 5” brick work.
- Outside walls are plastered 5” brick work.
- All interior are also plastered 5” brick work.

Painting & Polishing:

- Berger / Asian / Elite/ Equivalent

Stair:

- SS / MS Railing.
- RAK / CBC / Equivalent Tiles.

Water Pump:

- Pedrollo / Similarity.

Utility Lines (Water & Gas):

- Concealed water lines. Sewerage & stream water connected to WASA.
- Water reservoir designed to hold two and half day's water supply in the roof top tank.
- Concealed gas lines.
- Underground water reservoir.

Generator:

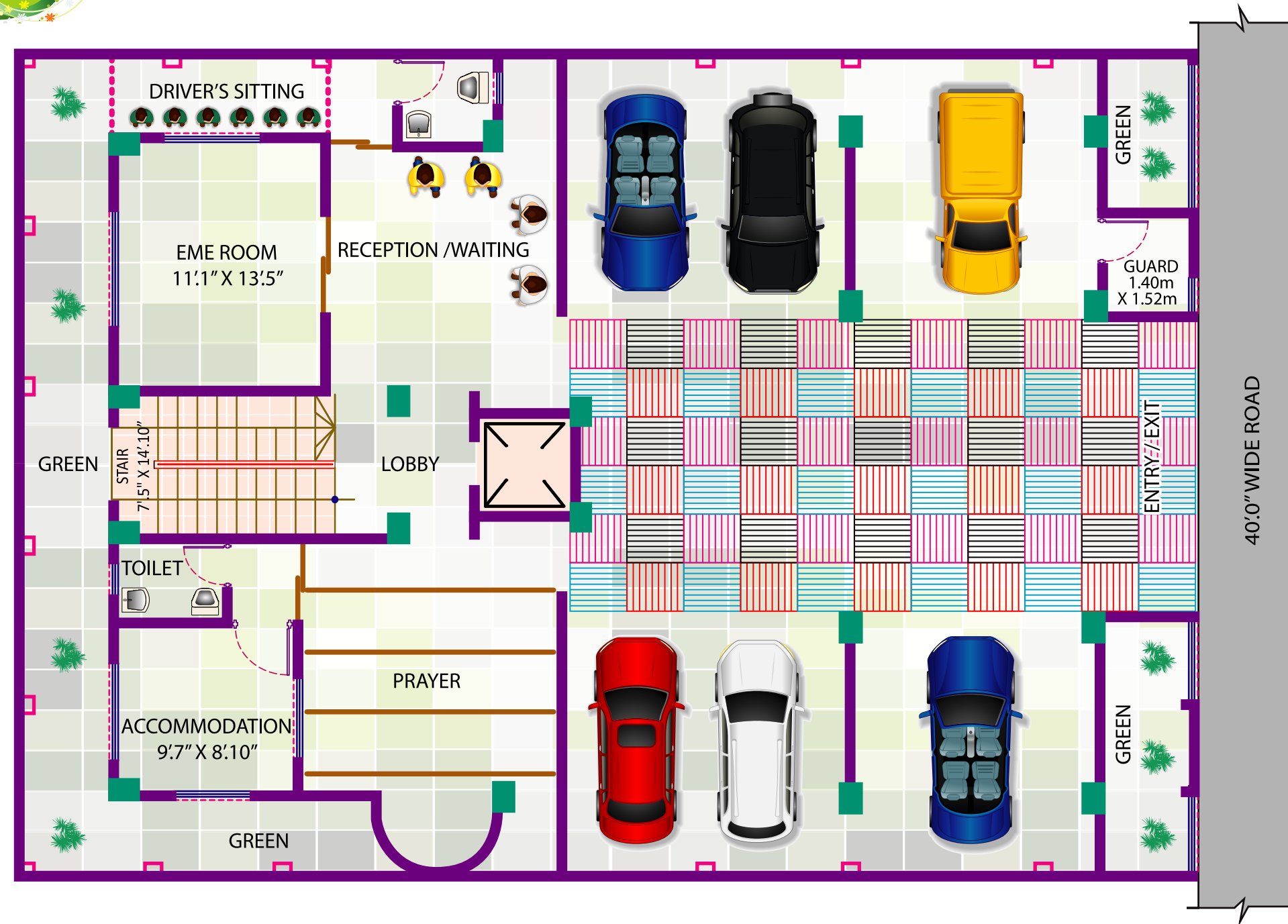
- Renowned branded good quality generator imported from China.

Lift:

- Renowned branded good quality Lift imported from China.



Car Parking



Our Projects



Aramaic South Home
298-299, South Paikpara,
Mirpur, Dhaka-1216.



Aramaic South Palmoni
House # 8/9, Lane-2, Section 10/A
Mirpur-10, Dhaka-1216.



Aramaic South Breeze
359, 363 South Paikpara,
Mirpur, Dhaka-1216



MHM-AL-HERA
428/C, Garden View Road, South Paikpara,
Mirpur, Dhaka-1216



MHM-ARA NOOR CASTLE
House # 728, Block-G, Afroza Begum Road
Bashundhara, Dhaka.

Head Office :
471/1, Main Road
South Paikpara
Mirpur, Dhaka-1216

mhmpropertiesltd@gmail.com

Phone : 9009610, 9020638
Mobile : +880 1711 100 260
Hotline : +880 1730 097 575

